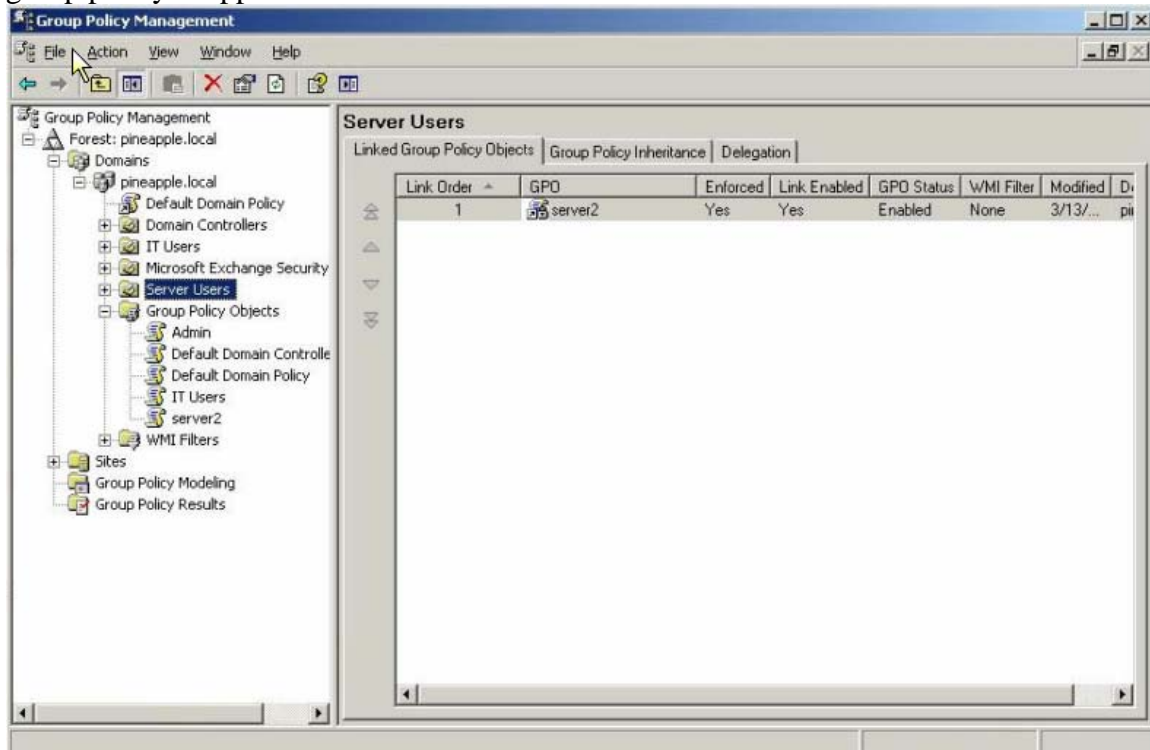


Designing Effective Edirectory for Security

Like its Microsoft counterpart the Novell platform is LDAP compatible so users can be organized and micro organized in several different ways allowing for ease of administration. OU's in Windows or Contexts in Netware allow users to be separated while programs like LDAP contextless login allow ease of sign on for users across the Netware platform. Using contexts or Organizational units to categorize users is a definite must for security practices not just for organization reasons but it also allows you to deploy a more effective security policy.

However unlike Microsoft windows the organizational security isn't built into the organization units. On a windows platform OU's are the only way to apply specific group policies to specific users, however in NetWare that is not the case, the framework is present but the administrators must activate the security on there own. This is due to Netware's more heavy emphasis on the individual users access rights whereas Microsoft is more concerned with group access rights.

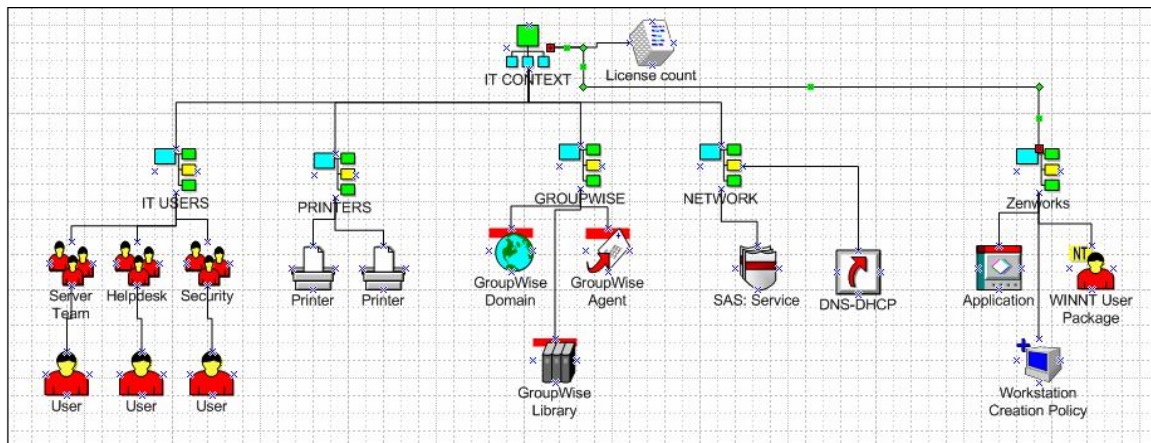
The image bellow is a Microsoft group policy management console illustrating how group policy is applied to OU's and not to individual users



In small companies or installations where only one physical location is available the OU section of the Netware edirectory design modal is not implemented on such a large scale, the individual departments can be sectioned off using contexts, which allow for more flexibility when implementing the Netware environment.

Additionally the structure where the IT objects are deployed is also necessary to consider. For security reasons IT objects (post offices, server objects and security policies) should be kept in a separate context so to prevent tampering with the objects or unnecessary damage.

A implementation of the IT context I find useful is the following



The only exception to the IT Context policy is Volumes. Volume objects should be placed in the root of there intended use context, Volumes should never be placed in Organizational Units.

The following screenshot is a example of a effectively designed edirectory from a security perspective

